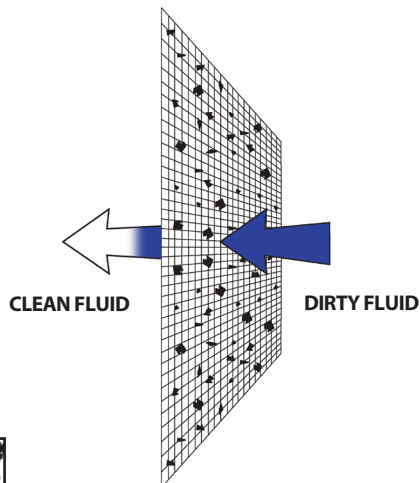
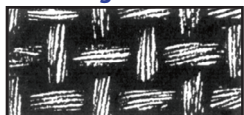


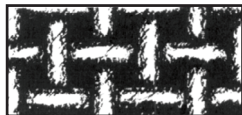
- Micron ratings from 1 to 1500
- All industry standard and custom sizes available
- High flow/low pressure drop media
- Surface-retention filtration
- Wide chemical compatibility
- Sewn construction
- Handles standard on all bags
- Choice of steel ring or plastic flange
- Economical removal of non-deformable contaminants
- Non-fiber releasing
- Good removal efficiencies
- Temperature ratings to 350°F
- Polyester and nylon materials meet FDA regulations for contact under CFR21, section 177.1520
- Silicone-free construction



Mesh Bag Materials



Multifilament Mesh media is woven from threads made of smaller fibers. Bags made from this material are low cost and disposable.



Monofilament Mesh is woven from single-fiber threads. The openings are square and uniform. Bags made from this material have excellent strength.

Mesh Bag Styles

Steel-ring bags have a galvanized steel ring (stainless steel optional) sewn into the top of the bag. They are supplied with sewn seams standard.

Plastic flange bags have a specially-designed flange sewn to the top of the bag. They are supplied with sewn seams standard (welded collars available upon request).

Mesh Materials	Micro Ratings																				
	1	5	10	25	35	45	50	75	100	125	150	175	200	250	300	400	600	800	1000	1500	
NMO = Nylon Monofilament	•	•	•	•	•	•	•	•	•	•	•	•	•	•	•	•	•	•	•	•	
POMO = Polypropylene Monofilament									•	•	•	•	•	•	•	•	•	•	•	•	
NMU = Nylon Multifilament									•	•	•	•	•	•	•	•	•	•	•	•	•
PEMU = Polyester Multifilament									•	•	•	•	•	•	•	•	•	•	•	•	•

Ordering Information

Media Type	Micron Rating	Bag Dimensions		Ring / Flange Styles	Options
		Size	Diam. Length		
NMO = Nylon Monofilament	See Chart	P1 = 7.06"	16.5"	S = Galvanized steel	H = Handle (Standard on all ring style bags)
POMO = Polypropylene Monofilament	See Chart	P2 = 7.06"	32.0"	SS = Stainless steel	EB = Edge binding
NMU = Nylon Multifilament	See Chart	P3 = 4.12"	8.0"	PP = Polypropylene ring	A = Auto seams
PEMU = Polyester Multifilament	See Chart	P4 = 4.12"	14.0"	T = Titanium	TTA = Turn, top stitch, auto seam
		P5 = 4.12"	24.0"	P = AJR-P Flange	RC = Reverse collar
		P7 = 5.50"	15.0"	F = AJR-F Flange	
		P8 = 5.50"	21.0"	OSS = AJR-OSS	
		P9 = 5.50"	31.0"	DS = Draw string	
		P11 = 8.50"	16.0"	NR = No ring	
		P12 = 8.50"	32.0"	E = Santoprene	
		C1 = 7.31"	16.5"		
		C2 = 7.31"	32.5"		
		RP-1 = 8.0"	30.0"		
		RP-2 = 8.0"	40.0"		
		PC-1 = 9.0"	20.0"		
		PC-2 = 9.0"	30.0"		
		X1 = 4.35"	8.0"		
		X2 = 4.35"	14.0"		
		XO1 = 6.0"	22.0"		